

COVID-19 Post-Lockdown Highway Schemes

Appendix	12
Location	Walworth Road
Proposal	To implement permeable closures of the junctions with Browning Street and Larcom Street including the removal of one-way operation on Larcom Street
Ward(s) affected	North Walworth

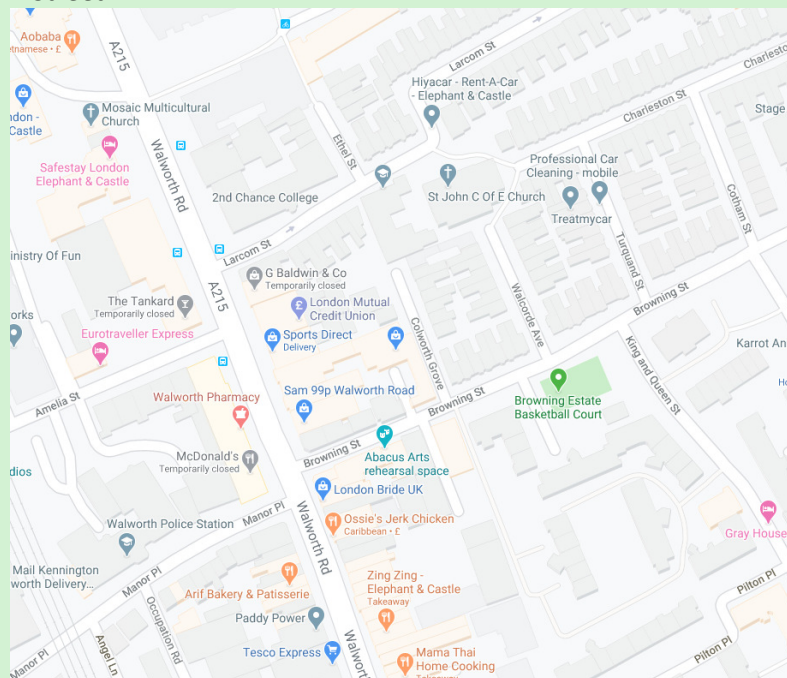
Background

As lockdown is lifted people will be encouraged to avoid crowded public transport. This introduces a risk of an increase in private car use. This will have a considerable negative impact on air quality, which is considered to be poor in this part of London. The council is seeking to take immediate steps to ensure that the communities of North Walworth are protected from the effects of excessive through traffic.

The council have previously engaged with residents in the Walworth area on measures to discourage residential streets from being used as a cut-through by traffic, and create safer streets for active travel, social and play activities. Feedback received shows support for measures to improve road safety conditions and encourage active travel and play within the community

Location

Walworth Road, junctions with Browning Street and Larcom Street including the removal of one-way operation on Larcom Street



Investigation and conclusions

- 95% of parents and students engaged state they walk, cycle and scoot to school
- Through-traffic and high speeds identified as major concern
- Pollution hotspot prior to Covid-19
- Access to green spaces can be difficult due to road safety dangers
- Safer walking and cycling routes and activity areas required for children and young adults
- Safer play areas are needed around green spaces to enable physical activities

Feedback from Councillors

Comments	Tbc
-----------------	-----

Recommendation

The following recommendations are proposed:

- To implement a permeable closure at the junction of Browning Street and Walworth Road
- To implement a permeable closure at the junction of Larcom Street and Walworth Road
- Removal of one-way operation on Larcom Street
- This proposal will result in:
 - the removal of a loading bay,
 - the relocation of two disabled parking bays,
 - the removal of two disabled parking bays
 - The loss of three permit holder parking bays

This proposal is experimental and is therefore not subject to standard Traffic Management Order (TMO) statutory consultation. A TMO is the legal mechanism the council as traffic authority uses to control aspects of the way that the highway is used. They provide the legal backing to signs and road markings used on the highway and allow them to be enforceable.

Audit trail

Reference	C19MTSB1-012
Report author	CAF
Ward members notified	TBC

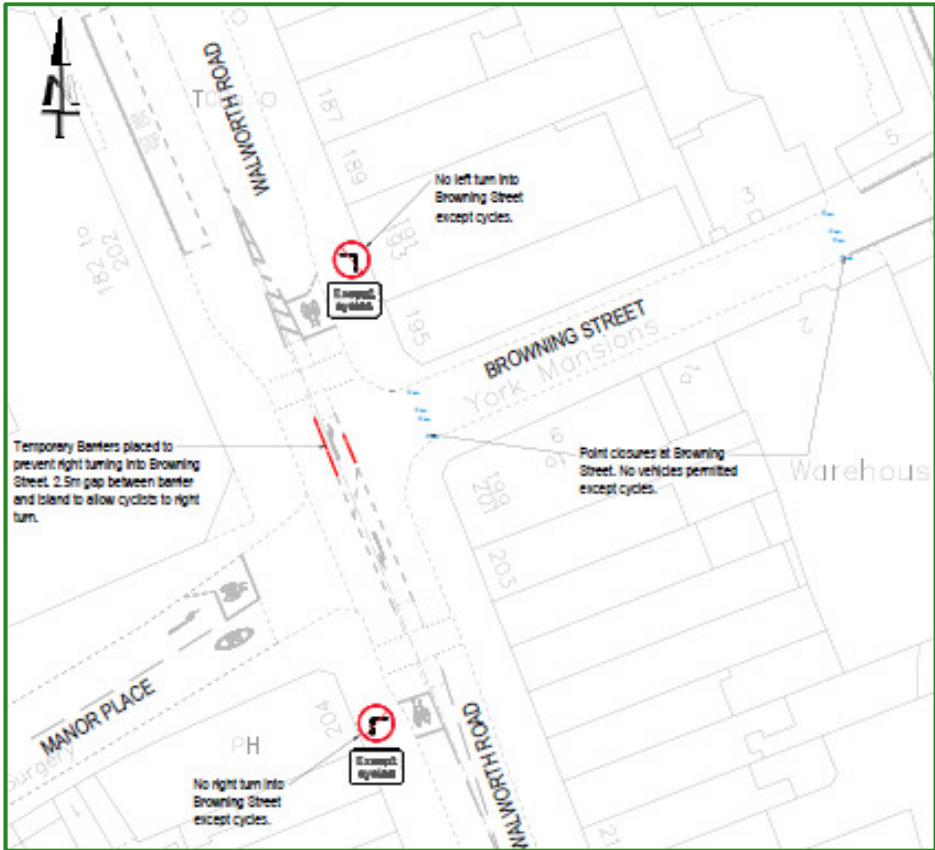


Fig. 1: Browning Street junction of Walworth Road

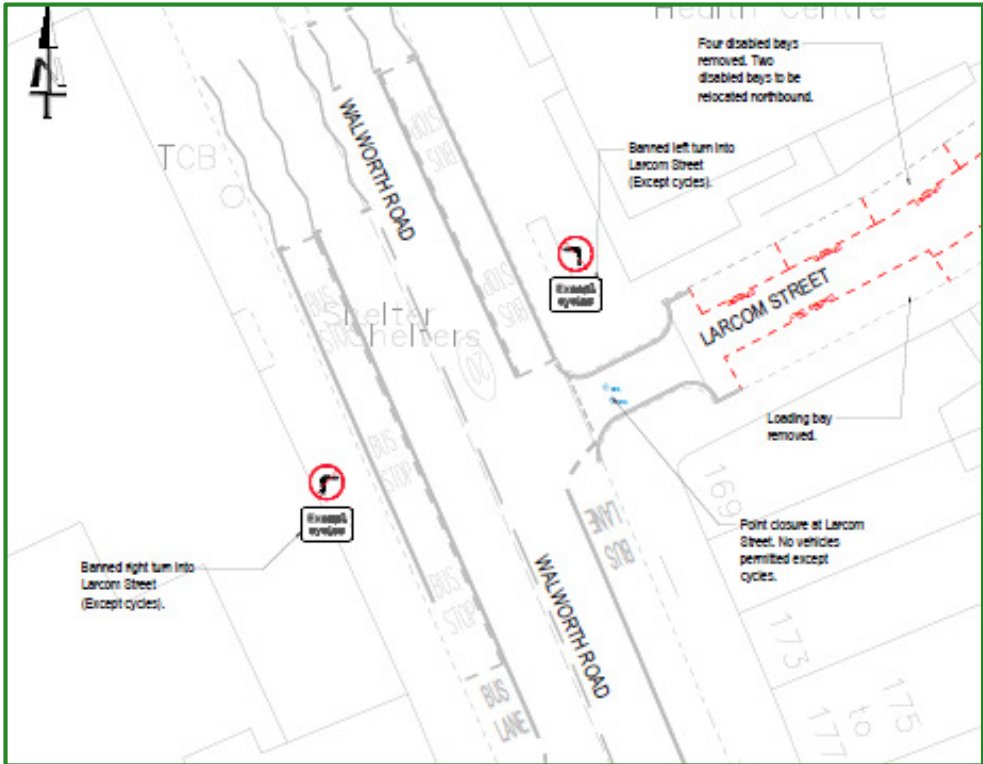


Fig. 2: Larcom St junction of Walworth Road

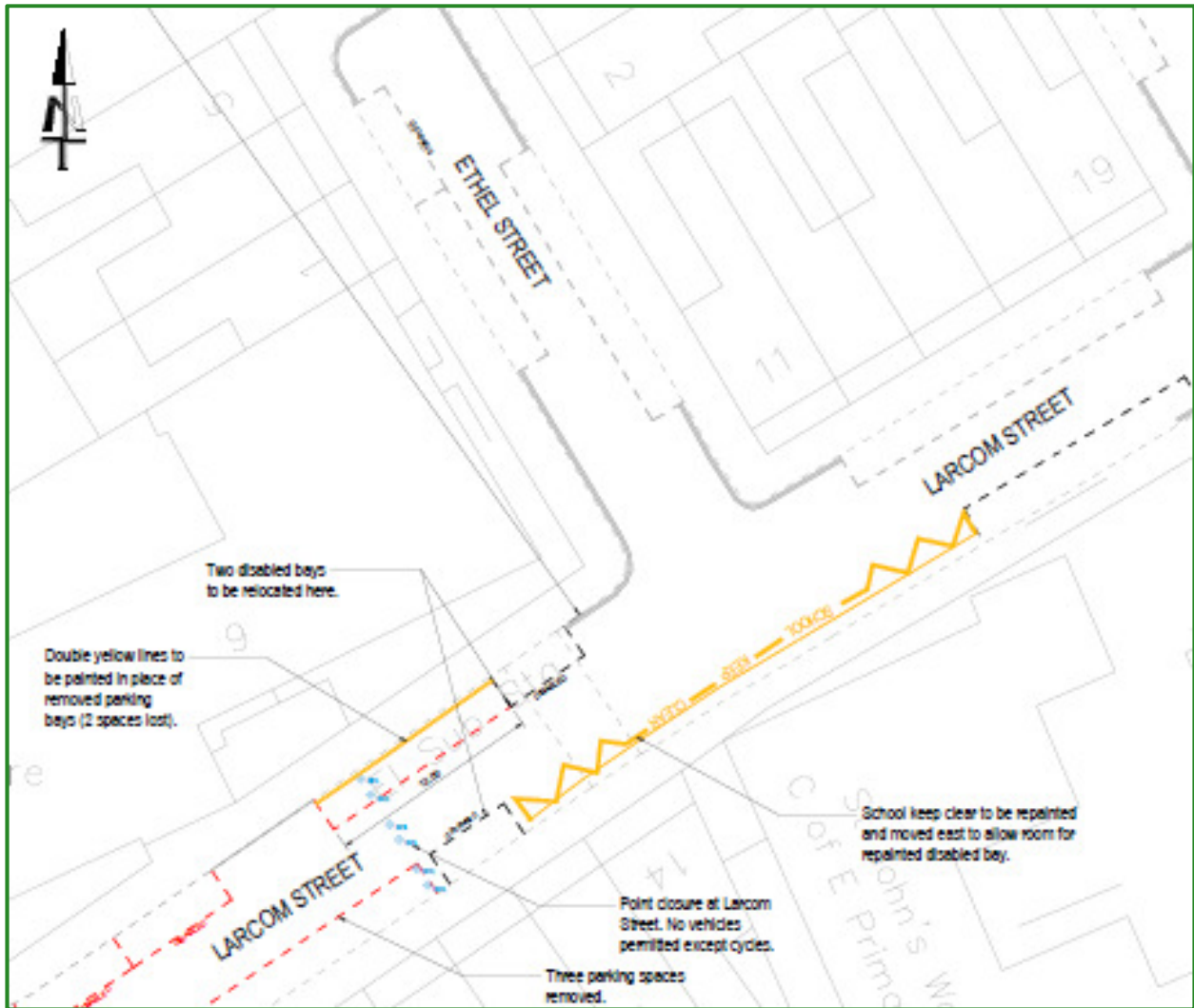


Fig. 3: Larcom St junction of Ethel