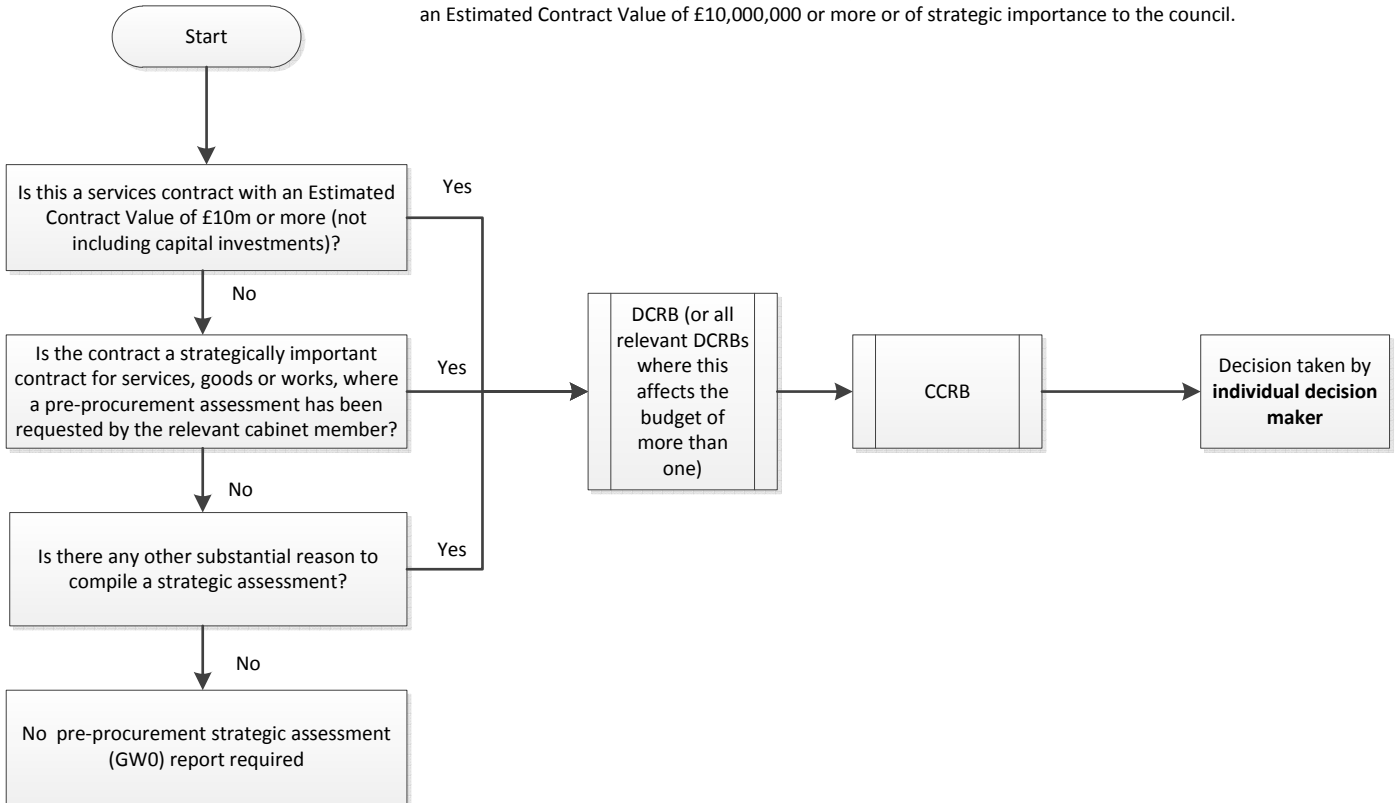


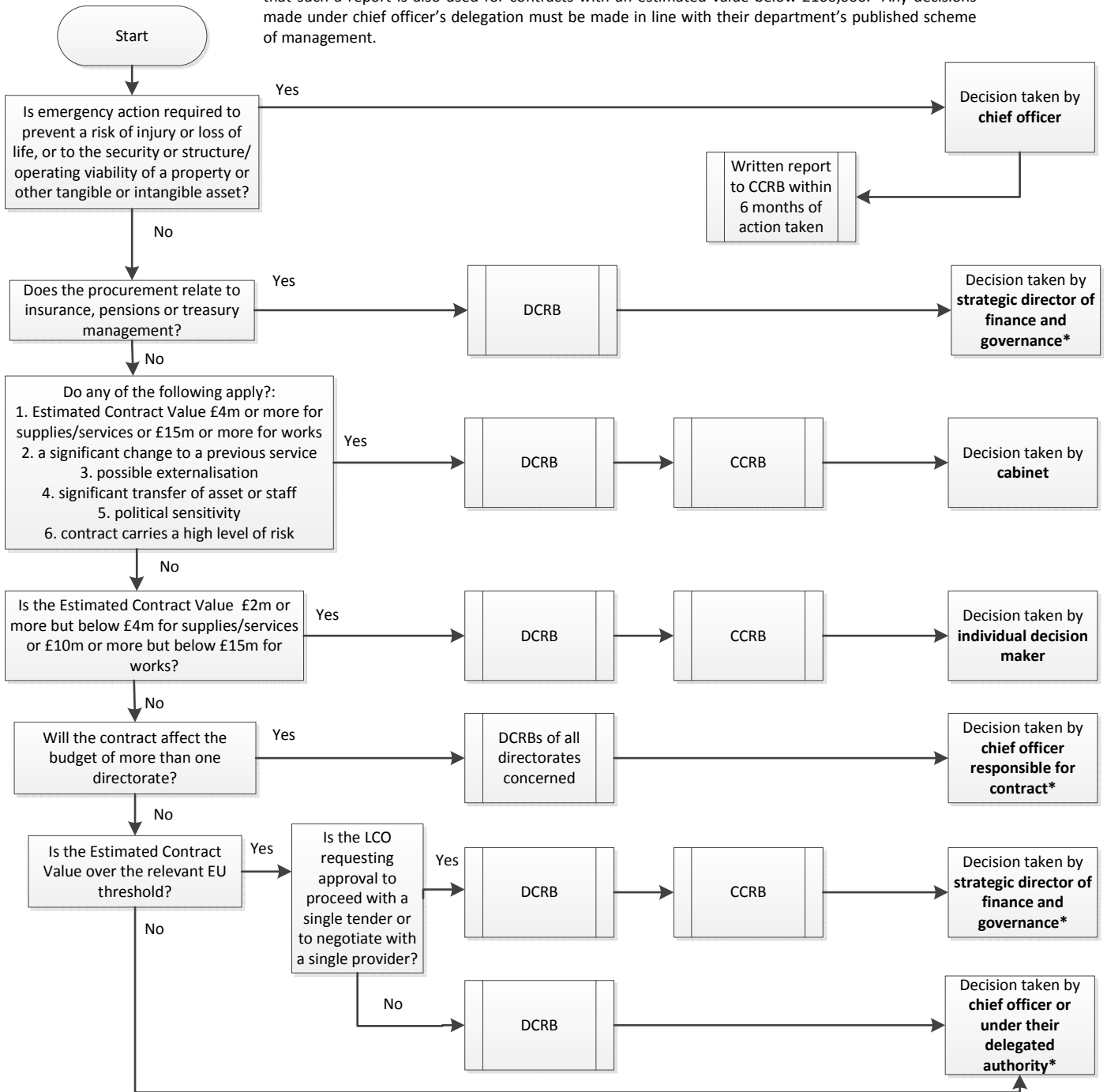
Decision on Pre-Procurement Strategic Assessment - GW0

A decision on the (GW0) pre-procurement strategic assessment is only for service contracts either with an Estimated Contract Value of £10,000,000 or more or of strategic importance to the council.



Decision on Procurement Strategy - GW1

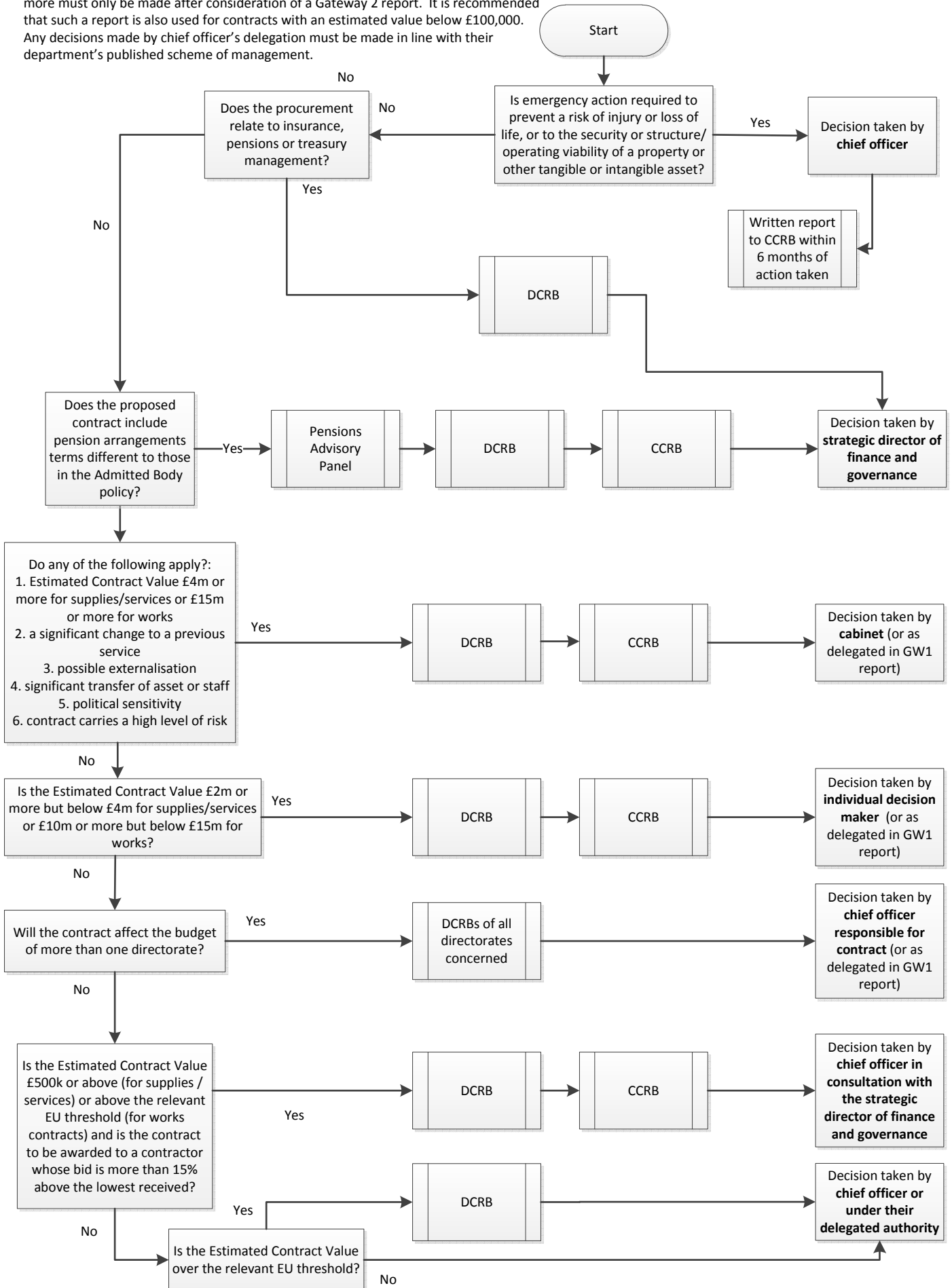
A decision on the procurement strategy to be used on any contract with an Estimated Contract Value of £100,000 or more must only be made after consideration of a Gateway 1 report. It is recommended that such a report is also used for contracts with an estimated value below £100,000. Any decisions made under chief officer's delegation must be made in line with their department's published scheme of management.



* All procurement strategies with a value of £100k or more should involve a briefing to the individual decision makers before they are implemented

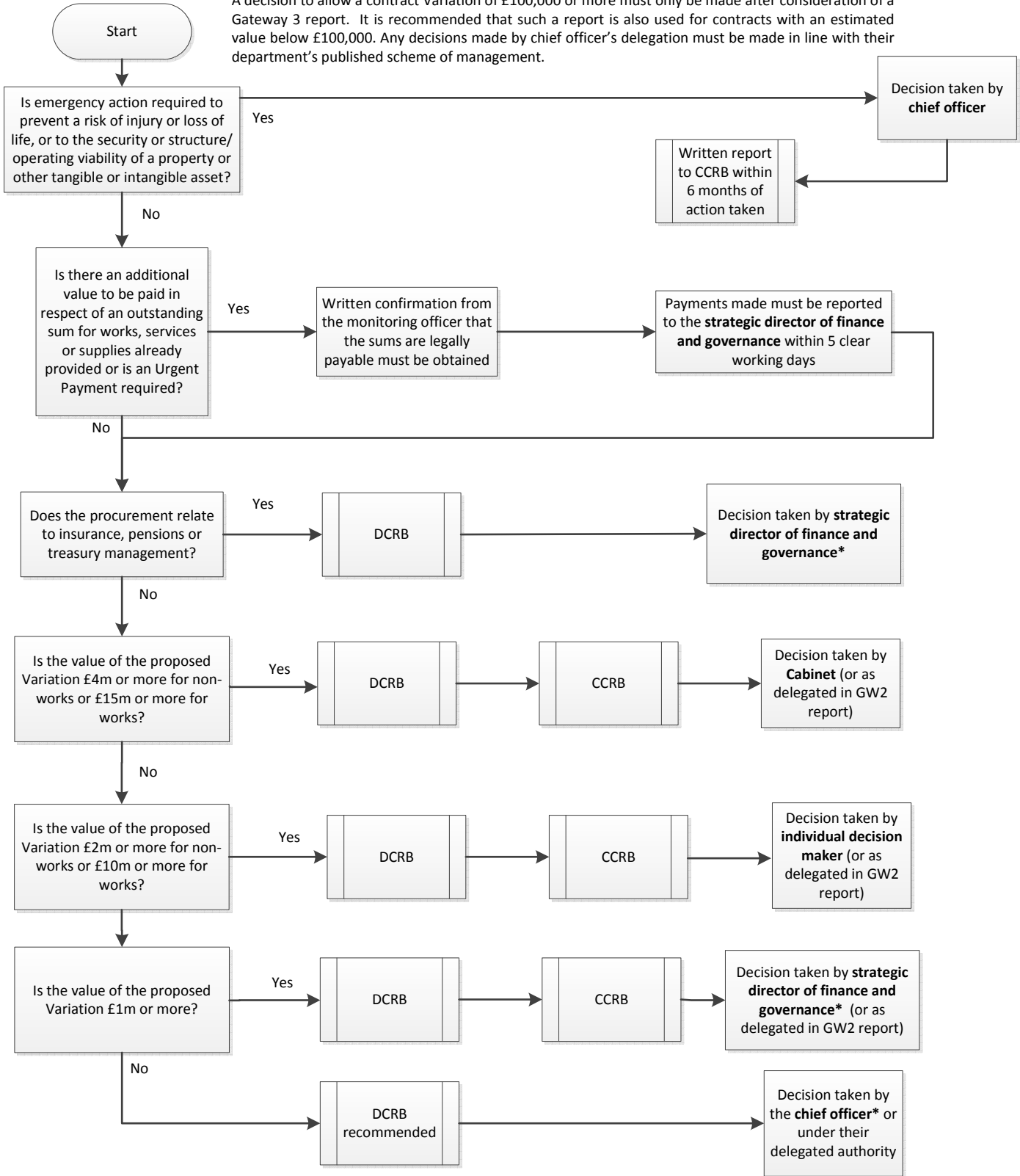
Decision on Contract Award - GW2

A decision to award any contract with an Estimated Contract Value of £100,000 or more must only be made after consideration of a Gateway 2 report. It is recommended that such a report is also used for contracts with an estimated value below £100,000. Any decisions made by chief officer's delegation must be made in line with their department's published scheme of management.



Decision on Contract Variation - GW3

A decision to allow a contract Variation of £100,000 or more must only be made after consideration of a Gateway 3 report. It is recommended that such a report is also used for contracts with an estimated value below £100,000. Any decisions made by chief officer's delegation must be made in line with their department's published scheme of management.



* All contract Variation decisions with a value of £100k or more should involve a briefing to the individual decision makers before they are implemented

Procurement Process Overview

Overview of procurement process and post-contract requirements.

