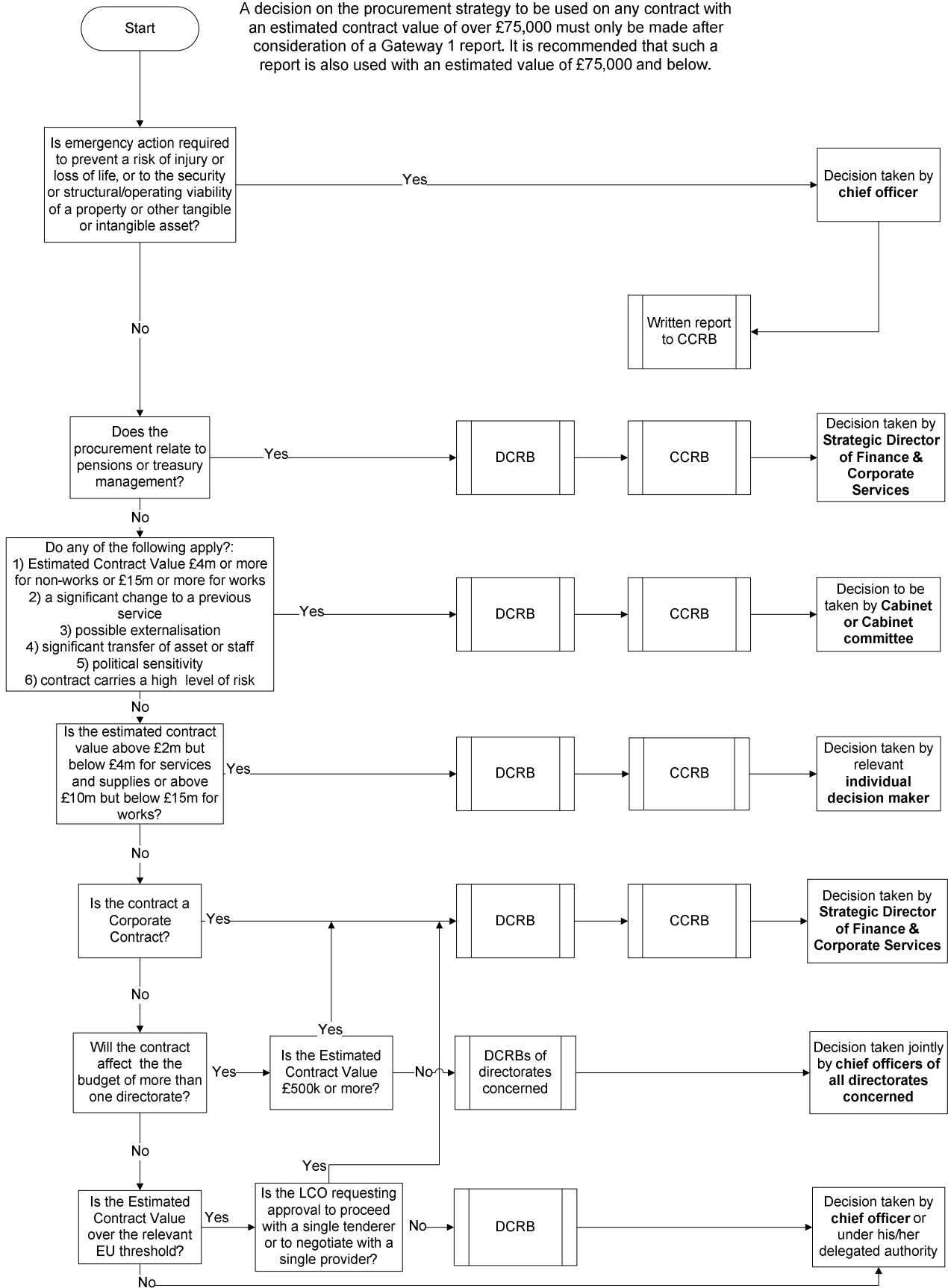


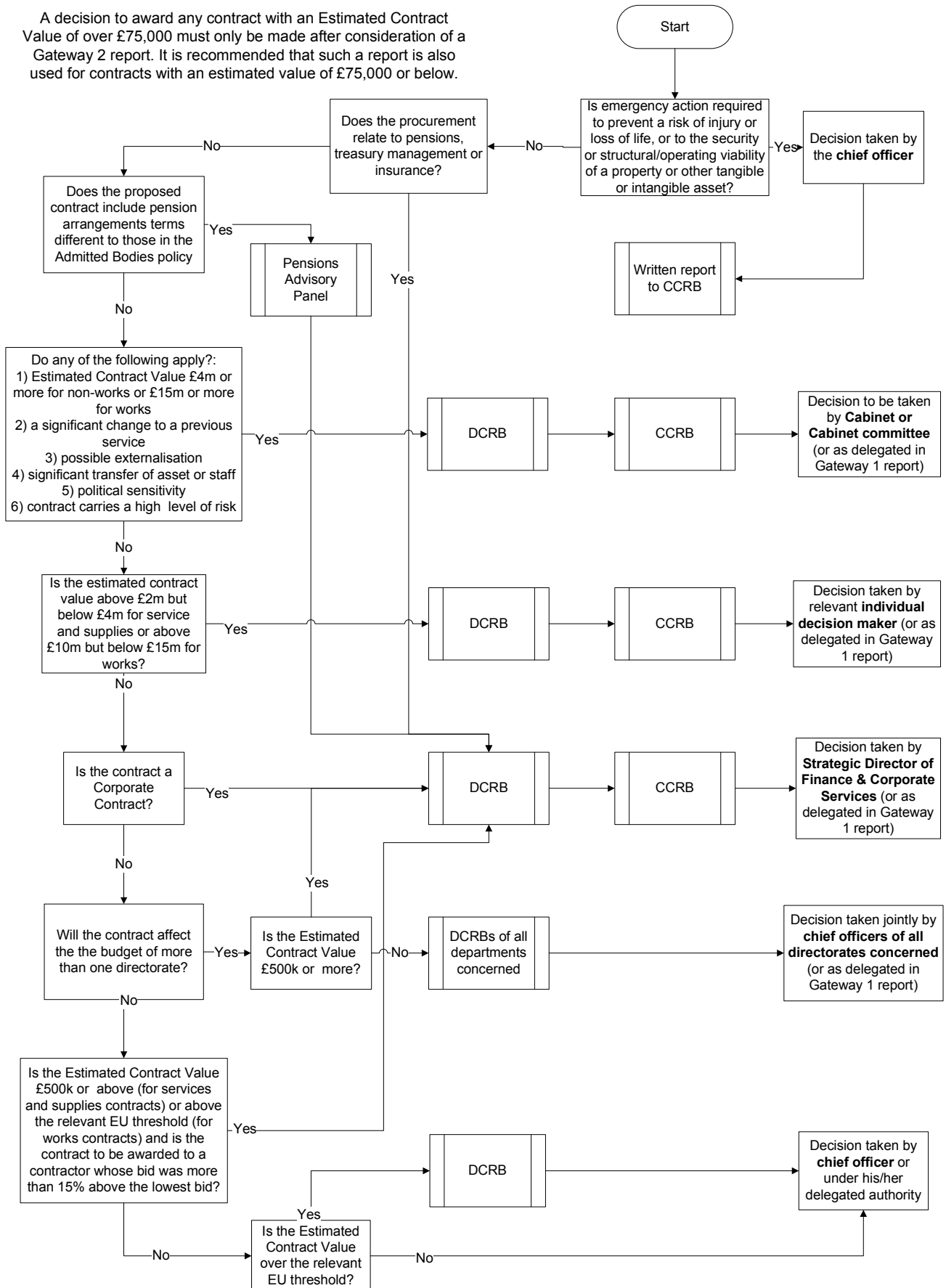
## Decision on Procurement Strategy - Gateway 1

A decision on the procurement strategy to be used on any contract with an estimated contract value of over £75,000 must only be made after consideration of a Gateway 1 report. It is recommended that such a report is also used with an estimated value of £75,000 and below.



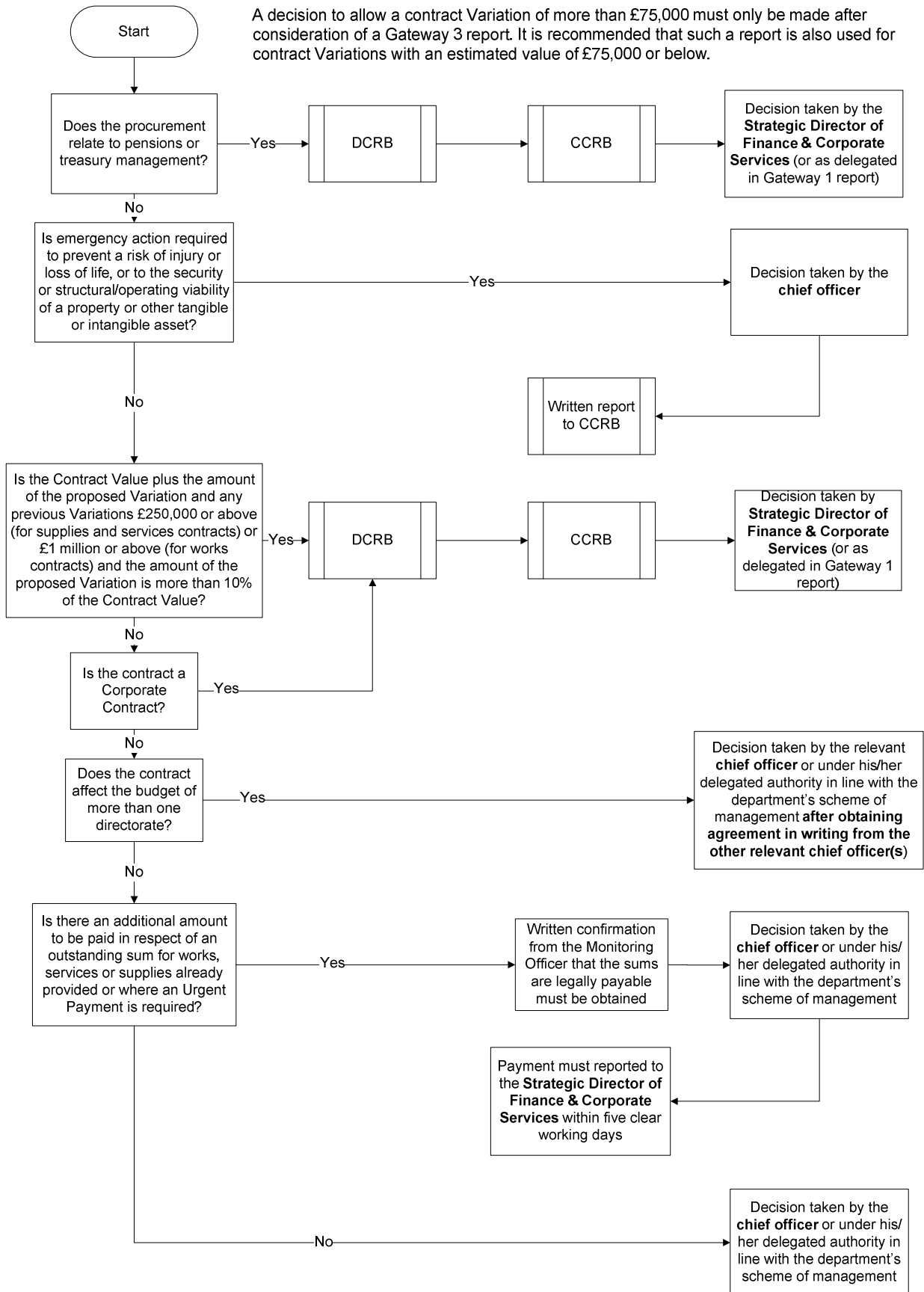
## Decision on Contract Award - Gateway 2

A decision to award any contract with an Estimated Contract Value of over £75,000 must only be made after consideration of a Gateway 2 report. It is recommended that such a report is also used for contracts with an estimated value of £75,000 or below.



## Proposed Decision on Variation to a Contract - Gateway 3

A decision to allow a contract Variation of more than £75,000 must only be made after consideration of a Gateway 3 report. It is recommended that such a report is also used for contract Variations with an estimated value of £75,000 or below.



**Requirements to obtain Quotes and Tenders**

