

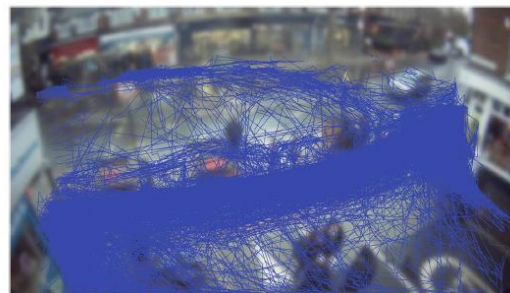
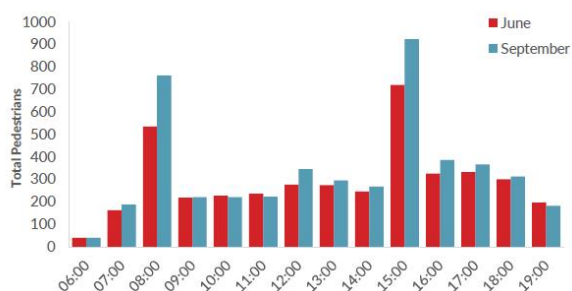
Melbourne Grove North traffic filter – retain location at jcn with Grove Vale

Statement of reasons

This document provides evidence that supports retaining the traffic filter on Melbourne Grove North at the junction with Grove Vale for a temporary period to be able to continue to monitor these trends.

Pedestrian activity

A vivacity sensor located at the junction of Grove Vale and Melbourne Grove North shows high pedestrian activity throughout the day, but particularly at the school opening and closing times indicating a large proportion of the pedestrians are school pupils.



From June to September 2021 pedestrian activity at this location increased by 13% and at its busiest hour in September over 900 pedestrians are using the space.

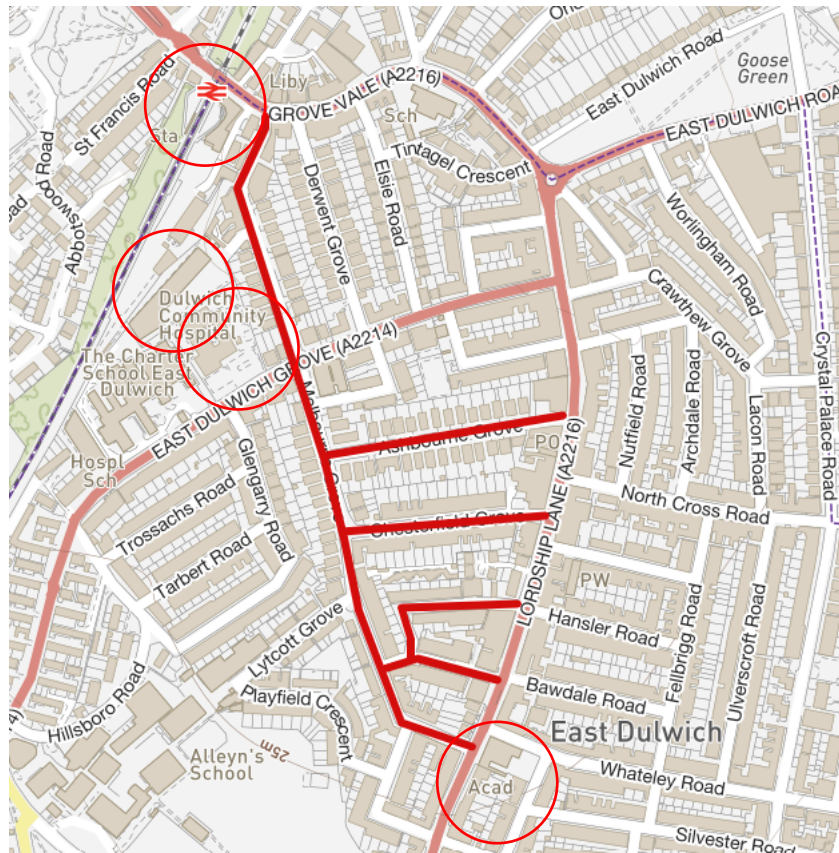
A traffic filter located at the junction of Grove Vale and Melbourne Grove North safeguards the high volume of pedestrians using this junction. Previously, before the Streetspace measures were introduced, Melbourne Grove North was used as a through-traffic route, increasing the number of motor vehicles turning in and out of this side road, causing potential conflict with pedestrians in this location.

Monitoring results so far shows a high proportion of pedestrian movements along Melbourne Grove - Grove Vale corridor. The traffic filter located here improves the pedestrian connectivity and experience of Grove Vale high street particularly in consideration of the other traffic filters installed on the side road junctions of Grove Vale (southern kerb).

Further monitoring and pedestrian flow and safety at this location is required to ascertain trends of how the traffic filter at the junction of Grove Vale is working. However, currently the evidence shows that the location of the closure seems to provide a safer environment for pedestrians on Melbourne Grove north, especially for school pupils, but also those walking along Grove Vale, including those accessing local schools and transport hubs.

Melbourne Grove North traffic filter – retain location at jcn with Grove Vale

Melbourne Grove is a key corridor for active travel



Melbourne Grove connects Lordship Lane and Grove Vale, both two flourishing high streets with a wealth of attractive retail, hospitality and leisure establishments and the Tessa Jowell Health Centre.

It also connects with East Dulwich Station and buses, providing key public transport routes in to Central and South London.

Located along or nearby Melbourne Grove are two well attended schools, Charter School East Dulwich and Harris Primary Academy East Dulwich.

Melbourne Grove is a key corridor that connects a number of local destinations as highlighted above. Traffic filters located along Melbourne Grove ensures this corridor is safe and attractive for pedestrians and cyclists to use and offers an alternative route to busier junctions along Lordship Lane and Grove Vale.

Further monitoring is required of the traffic filters on Melbourne Grove North and South in their current location and form to ascertain how well this active travel corridor is being achieved.